



Satellite Family Child Care System

September 2024 Newsletter

Welcome Satellite Affiliate members!

Tara Speckman – Tiny Hands

Antonieta Patricia Lopez – Mis Primeros Pasos al Éxito

Kewannee Allen – Explorers of Truth Child Development, Inc.

Sarah Grunewald – Silly Sprouts

Congrats on your first Accreditation!



Elena Flores – Little Sunshine
Bilingual Family Childcare

Congrats on moving to Associate level!

Danielle Hendrix – A New Beginning Family Child Care

Lynda Nelson – Happy Hearts Childcare

Chelsea Andrews – Little Learners Daycare

Congrats on your Reaccreditation!



Nancy Rosales Franco –
Paraíso Infantil Child Care Center

Silvia Ahiquele-Ortega –
Rinconcito de Luz



Corrine Hendrickson –
Corrine's Little Explorers



satellite Gathering

Join us for a social gathering open to Satellite family child care professionals. Spend an evening together, enjoy dinner, and participate in an optional watercolor activity.

Reach Dane - South Madison
3201 Latham Dr, **Madison**

Oct 23 [REGISTER HERE](#)

Northeastern Region
WINTER 2025

Western Region
SUMMER 2025

Southeastern Region
FALL 2025



Attending Blue's Family Child Care since they were three months old, these children are ready for school! Mery Mancera hosted a celebration to honor her graduates with her program's families. There was good music, good food, and goodbyes.

LEARNING AND CONNECTING TOGETHER

SPOTLIGHT ON

Amy & Kids Co. Nature Playschool

Program Owner: Amy Nogar, Affiliate Satellite Provider

"Amy & Kids Co. Nature Playschool is a year-round nature-based family child care program located in Appleton, WI. This fall we'll celebrate 25 years in business! My program emphasizes child-led play, inquiry-based learning, and connecting children with nature." – Amy Nogar



"I'm particularly proud of the way my program, philosophy, and attitudes have changed due to continuous learning and professional development over the years. I earned my associate degree in early childhood education in 2003, completed the Family Child Care credential in 2015, and recently finished the Nature Based Early Childhood Education credential this past May. I particularly value everything I've learned about the importance of child-led free play, natural environments, and the benefits of being outside in nature." – Amy Nogar

"I think the nature-based approach of my program sets it apart. Being nature-based means the children are outside in all kinds of weather, getting messy, and taking risks. Our outdoor space has been Nature Explore certified since 2019 and is set up so the children can do almost everything outside that they would do inside, including napping outside as often as we can. We also have a naturalist who visits regularly to teach the children about different aspects of nature." – Amy Nogar



LEARNING AND CONNECTING TOGETHER

SPOTLIGHT ON The Playhouse Family Child Care

Program Owner: Alison Joseph
Affiliate Satellite Provider

“The Playhouse Family Child Care opened just under a year ago and is located in Sun Prairie. I am serving families in an area where licensed family childcare is not as easy to come by. I am proud to be running a program that is strongly play based and Reggio Emilio inspired.” – Alison Joseph



“We love digging into a topic and learning as much about it as we can. Summer was all about toads, and we now have a whopping 5 pet toads we have found on our adventures in the yard and neighborhood. The kids feed them daily and care for them. This is my second time jumping into family child care and I’m proud this time around to be doing it all on my own which brings its own challenges and benefits!” – Alison Joseph



“I think something very unique about my program is the true family feel that we have. As I have three of my own children in the program, it often feels like we are just going about business with friends in tow. Most of our families live, if not on the same street, in the same neighborhood.” – Alison Joseph

DIVING INTO THE STANDARDS

Children's Active Engagement

Relevant Satellite Accreditation Standards

III. The Daily Program for Children

B. Children learn through self-paced play, and through active engagement with materials, the provider, and other children.

II. Physical Environment, Equipment and Materials

B. Materials and equipment are developmentally suited and appealing to all children in the group.

6. Materials are located close to the place children are likely to use them, and children are able to find and replace materials on their own.

The Basics

Children's active engagement in early childhood education settings supports later academic achievement. Actively engaged children often demonstrate **motivation** and **persistence**. They create, build, experiment, discuss, and explore. On the other hand, disengaged children may show signs of **dysregulation**, including irritability, attention problems, and challenging behavior.



The program's environment matters! Look around—does every child in your program have access to developmentally appropriate materials within reach? Space to move? Can they choose to interact with peers and to spend time alone? Environments of actively involved children often include child choice and movement.



Children then develop:

- ❖ **emotional regulation**, or the ability to manage feelings.
- ❖ **self-control**, or the capacity to manage behavior.
- ❖ **independence**, which includes making decisions, practicing self-care, and solving problems.

The program's educator matters! Here is how you support children's active engagement:

- ❖ Observe, interpret, and respond to children's cues in a respectful and supportive way.
- ❖ Use descriptive feedback to expand children's play and learning.
- ❖ Explain choices that are safe, open, and available.
- ❖ Provide open-ended materials like blocks, sand, and art supplies.
- ❖ Rotate materials based on children's interest and behavior.



I want to learn more!

- [Entering and Sustaining Play](#)
- [Children's Engagement within the Preschool Classroom and Their Development of Self-Regulation](#)
- [Variation in Children's Classroom Engagement Throughout a Day in Preschool: Relations to Classroom and Child Factors](#)

Upcoming Professional Development



Children as Naturalists: Forest School in Family Child Care

This course will introduce Forest School as an approach to guiding curriculum practices in family child care through the six principles: long-term, nature, community, risk, holistic learning, and leadership. Participants will learn what forest school looks like in a wide variety of locations, why time in nature is so valuable to young children, and how educators may keep children safe while supporting healthy risk-taking behaviors. Co-founder of [Gather: A Forest School Community](#) Ashley Causey-Golden, licensed clinical social worker Janna Hack, and accreditation consultant Jen Jorgensen will lead the discussion.

September 11; 6 – 8 PM Zoom

English and Spanish

2 hours of Registry credit

[Register here](#) (by 9/9)



Exploring Quality in Family Child Care: Should We Tell Children to Apologize?

Licensed clinical social worker Janna Hack will explore what we are hoping children will gain from making apologies versus what can happen when we force children to apologize. Participants will learn strategies for what we can do to support children's development in empathy, conflict resolution, and accountability for the impact of their actions on others.

October 8; 1 – 2 PM Zoom

English and Spanish

1 hour of Registry credit

[Register here](#) (by 10/4)

Satellite Professional Development

Evening Professional Learning Opportunities



Wednesdays • 6 – 8 pm • Zoom • 2 hours of Registry credit • English and Spanish

Dates	Event	Registration
September 11	Children as Naturalists: Forest School in Family Child Care	Register by 9/9
October 30	Making it Work: Incorporating Rich Art Experiences into a Mixed-Age Setting	Register by 10/28
November 13	Nature-Based Winters: Indoors and Out in Family Child Care	Register by 11/11
February 26	Transitions Throughout the Day in Family Child Care: Strategies, Skills, and Wisdom from Satellite Programs	Register by 2/24
April 23	How to Create an Environment that Supports Children's Ideas AND Maintains Your Boundaries	Register by 4/21

Exploring Quality in Family Child Care

Tuesdays • 1 – 2 pm • Zoom • 1 hour of Registry credit • English and Spanish

Dates	Topic	Registration
October 8	Should We Tell Children to Apologize?	Register by 10/6
November 19	Dr. Peter Gray Discusses Mixed-Age Play	Register by 11/17
December 10	Process Art	Register by 12/8
January 7	Open-Ended Questions	Register by 1/5
February 4	Risky Play	Register by 2/2
March 11	Supporting Infant's Large Motor Development	Register by 3/9
April 8	Back-and-Forth Interactions	Register by 4/6

Guided Book Studies

Thursdays • 1 – 2 pm • Zoom • 16 hours of Registry credit • English only

Dates	Book	Registration
October 3 – November 21	Last Child in the Woods: Saving our Children from Nature-Deficit Disorder	Register by 9/5
January 9 – February 27	It's OK NOT to Share and Other Renegade Rules for Raising Competent and Compassionate Kids	Register by 12/12

Satellite Professional Development (Cont.)

Safety Saturday

7 am – 6 pm • 2096 Verona Road Fitchburg • English and Spanish

Only for programs participating in Satellite's accreditation system.

Date	Trainings	Registration
September 28	View the conference program here .	Register by 9/14

Obtaining Registry Credit* for Satellite's Virtual (Zoom) Professional Development Sessions

To receive hours of Registry of credit for web-based professional development, you must:

1. Be present for at least 75% of the session.
2. Complete an evaluation at the end of the session and enter your Registry information.

You can view and print your proof of attendance through your [Wisconsin Registry](#) account. It may take several weeks before your attendance is entered into the Registry. Certificates of completion will not be mailed or emailed to participants.

*If you do not complete the steps above and wish to document a Satellite event that you attended or a Satellite event recording you watched, complete the DCF form [Continuing Education Record—Independent Reading/Video Viewing](#) for your own record.



Satellite Social Events

These opportunities are open to educators participating in Satellite's accreditation system.



Educator Appreciation Dinner

A dinner in honor of family child care professionals • 6 pm

Dates	Location	RSVP	🌐
October 9	Milwaukee	RSVP here	English, Spanish
March 19	Eau Claire	RSVP here	English
May 14	Madison	RSVP here	English, Spanish
June 25	Milwaukee	RSVP here	English, Spanish

Satellite Gatherings

Time for family child care professionals to spend together • 6 pm

Dates	Location	RSVP	🌐
October 23	Madison	RSVP here	English, Spanish
January 8	Madison	RSVP here	English, Spanish
February 19	Kimberly	RSVP here	English

Satellite Support Groups

Noche Latina

An evening for Spanish speaking family child care professionals.

6 – 8 pm • Spanish • 4709 Verona Road Madison • Contact evargas@reachdane.org with questions

October 16

November 20

December 11

February 12

March 12

April 9

June 11

Sojourn

A support group for Satellite family child care professionals that meets at family programs.

Evening • Second Tuesday of every month • English • Madison area • RSVP to letthedragonfly@gmail.com

September 10

October 8

November 12

December 10

January 14

February 11

March 11

April 8

May 13

June 10

Arcoíris

A support group for Spanish speaking family child care professionals that meets at family programs.

Evening • Third Friday of every month • Madison area • RSPV to Margarita at (608) 446-6142

September 20

October 18

November 15

December 20

January 16

February 21

March 21

April 18

May 16

June 20

LEARNING AND CONNECTING TOGETHER

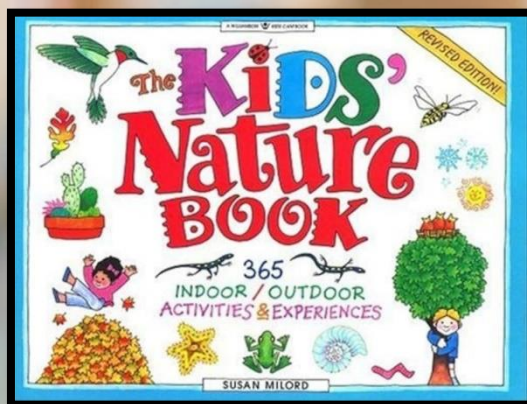
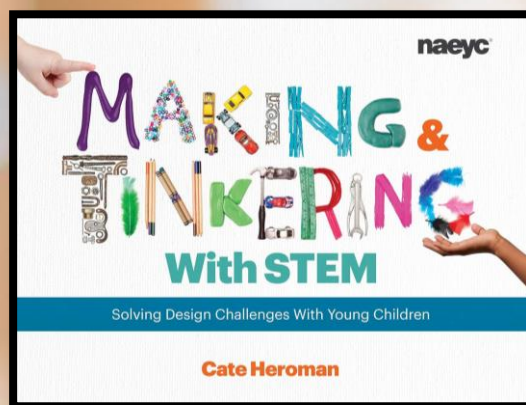
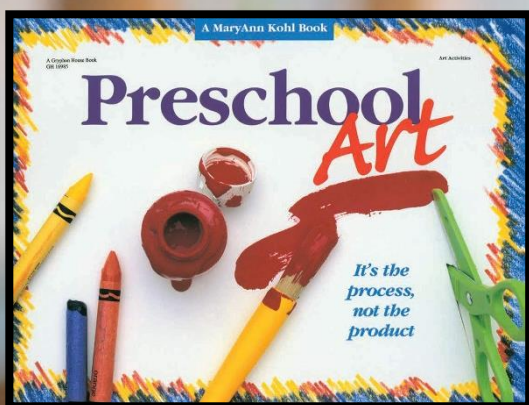
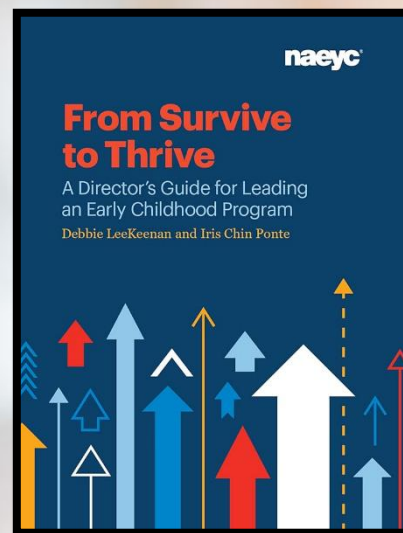
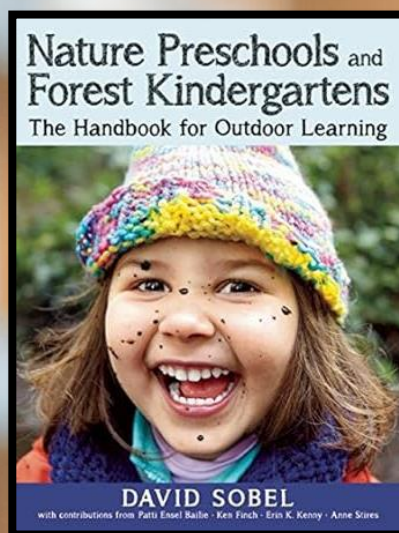
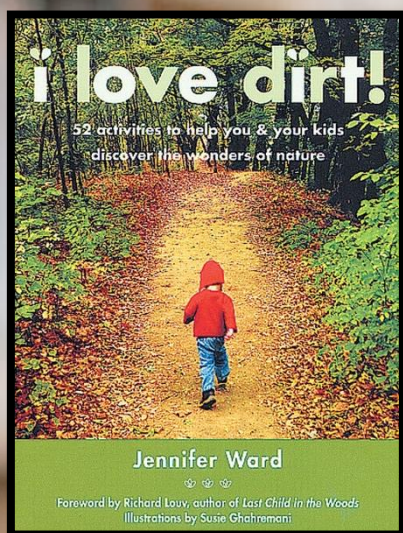
EARLY CHILDHOOD EDUCATOR RESOURCE LIBRARY

100+ books

Satellite members have full access to Satellite's early childhood educator resource books. Check the link below to view our full lending options.

[Satellite Library](#)

When you choose a book, your consultant will inform you of whether the item is available immediately or if you're on the waiting list.





WISCONSIN DEPARTMENT
of HEALTH SERVICES

Controlling Indoor Mold

Tiny mold spores are all around us, both indoors and outdoors. Mold spores travel easily through the air and begin to grow indoors when moisture is present. There is no practical way to eliminate all mold and mold spores from the indoors, so the best way to control mold growth is to control indoor moisture. When indoor conditions are just right, mold spores can grow and become a problem. By taking important steps, you can prevent and control mold growth inside your home. Learn more [here](#).



Radon and Your Health

High levels of radon are dangerous to you, your family, and the children in your program. Learn more [here](#). View an interactive map of Wisconsin indoor radon test results [here](#).

Did you know?

BETWEEN APRIL AND JUNE,
SATELLITE PROGRAMS BORROWED

92

CURRICULUM UNITS.



YOUR BUSINESS YOUR FINANCES

Professional Resources

Satellite Services

- [Mentorship Program](#)
- [Satellite Application](#)
- [Equipment and Unit Loan Program](#)
- [Lending Library](#)
- [Report your family child care program's child openings here](#)



Wisconsin

- [T.E.A.C.H. Scholarship Program](#)
- [REWARD Stipend Program](#)
- [Wisconsin Early Childhood Shared Services Network \(WEESSN\)](#)
- [The Wisconsin Registry](#)
- [Child Care Forms and Publications \(Licensing\)](#)
- [YoungStar Connect](#)
- [Early Childhood Mental Health Consultation](#)



Professional Organizations focused only on Family Child Care

- [Wisconsin Family Child Care Association](#)
- [Home Grown](#)
- [National Association for Family Child Care](#)



For Satellite
participating
programs only



The September Financial Wellness session is:

How to Build a Budget Your Way! Starting with the basics, you'll learn how to build a budget based on your income, set spending limits that you can live with and create a list of financial priorities that will help focus your spending and saving. Once you implement this helpful advice you will feel less financial stress and more confidence; then you will own your money instead of having your money own you.

Recorded Session: [Watch here!](#) (Use "Reach Dane" as the organization with whom you're affiliated)

Paperwork, Paperwork, Paperwork!

There is a lot of documentation to keep track of. Become familiar with Satellite's documentation requirements:

Document	Frequency
<input type="checkbox"/> Health report and TB test	<i>Complete within 1 year of enrollment, before reaching associate status</i>
<input type="checkbox"/> Home Safety Checklist	<i>4 times per year. Providers begin quarterly checks on this list when they become an affiliate provider. All items must be met before accreditation and consistently thereafter.</i>
<input type="checkbox"/> Liability Insurance	<i>Submit annually upon reaching associate status</i>
<input type="checkbox"/> Car Insurance	<i>Submit annually if transporting children</i>
<input type="checkbox"/> Quarterly survey	<i>4 times per year</i>
<input type="checkbox"/> Animal vaccinations	<i>Submit annually (if applicable)</i>
<input type="checkbox"/> Confidentiality release (information exchange between program and Satellite consultant)	<i>All newly enrolled children in program-or-included in program's policies</i>
<input type="checkbox"/> Continuing Education Record	<i>20 hours annually</i>
<input type="checkbox"/> Mandated Reporter Training	<i>Every 2 years</i>
<input type="checkbox"/> CPR	<i>Every 1 or 2 years (depends on expiration date on CPR card)</i>
<input type="checkbox"/> Program Policies	<i>Reviewed with each (re)accreditation</i>
<input type="checkbox"/> Parent/Provider contract	<i>Reviewed with each (re)accreditation</i>

Did you know?

BETWEEN APRIL AND JUNE,
703 CHILDREN
ATTENDED SATELLITE PROGRAMS.

SATELLITE ADVISORY COMMITTEE

Satellite deeply values input from those within the family child care community.

At each Advisory Committee meeting, the facilitator presents information about Satellite's support services and/or accreditation and then asks committee members related open-ended questions. Committee members are encouraged to use their unique backgrounds, personal and professional roles, and experiences as they share their perceptions and ideas.

Satellite's facilitator actively listens with the goal of utilizing committee members' expertise and experiences to strengthen the Satellite Family Child Care System.

Terri Lynn Alexander

Advisory Committee Member
Accredited Family Child Care Provider

Amy Nogar

Advisory Committee Member
Affiliate Family Child Care Provider



Shelly Boelter

Advisory Committee Member
Affiliate Family Child Care Provider

Sarah Olson

Advisory Committee Member
Associate Family Child Care Provider



Shannon Davis

Advisory Committee Member
Accredited Family Child Care Provider

Temitope Oluti

Advisory Committee Member
Affiliate Family Child Care Provider



Mykenzie Lerg

Advisory Committee Secretary
Satellite Consultant
(608) 843-5378 mlerg@reachdane.org

Nancy Rosales

Advisory Committee Member
Accredited Family Child Care Provider



Maria Luisa Mas

Advisory Committee Member
Accredited Family Child Care Provider

Laura Simkin

Advisory Committee Facilitator
Satellite Associate Director
(608) 381-2676 lsimkin@reachdane.org



Satellite Team



Estella Vargas

Accreditation Consultant
Bilingual (Spanish/English)
(608) 852-7724
evargas@reachdane.org



Amy Christianson

Language Access, Curriculum, and
Satellite Director
achristianson@reachdane.org



Jen Jorgensen

Accreditation Consultant
(608) 416-9531
jjorgensen@reachdane.org



Laura Simkin

Satellite Associate Director
(608) 381-2676
lsimkin@reachdane.org
*Contact Laura with all general questions
related to accreditation and Satellite services.*



Rachel Halstead

Accreditation Consultant
(608) 690-0174
rhalstead@reachdane.org



Grace Eilers

Family Child Care Content
Specialist
(608) 400-2823
geilers@reachdane.org



Stephanie Winkel

Accreditation Consultant
(608) 416-3996
swinkel@reachdane.org



Laura Cruz

Administrative Assistant
Bilingual (Spanish/English)
(608) 910-0382
lcruz@reachdane.org



Mykenzie Lerg

Accreditation Consultant
(608) 843-5378
mlerg@reachdane.org

Satellite Family Child Care System

(608) 275-6740

satellitefcc@reachdane.org

Mailing and drop-off address:

2096 Red Arrow Trail, Fitchburg, WI 53711

*Label mailed and hand delivered items with "attention:
Satellite" & and the Satellite staff person's name*

Satellite Supports



Thank you to our partners for helping us provide these services at no cost to participants:

